

CRESCENT — RIDGE —

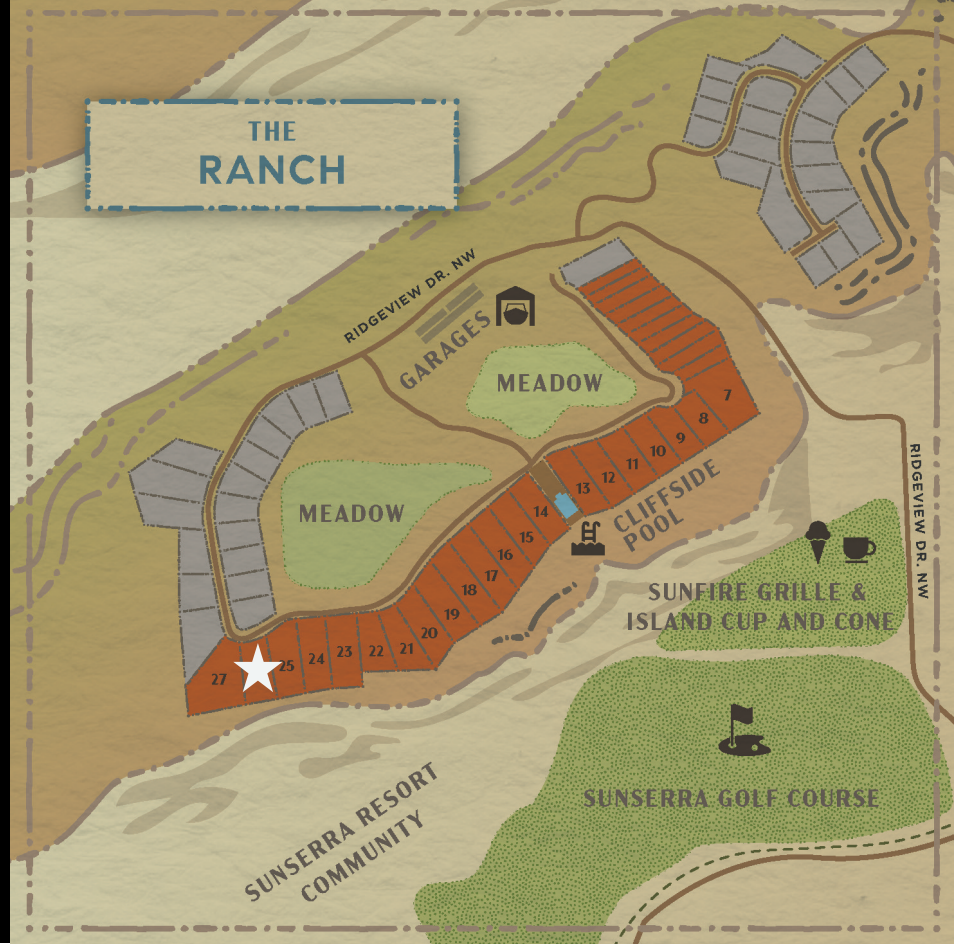
HOMESITE 26

NEIGHBORHOOD: THE RANCH

LOT SIZE: 0.59 ACRES

VIEW: FULL UNOBSTRUCTED (W-SW)

CONDITION: BUILD-READY



THE RANCH NEIGHBORHOOD

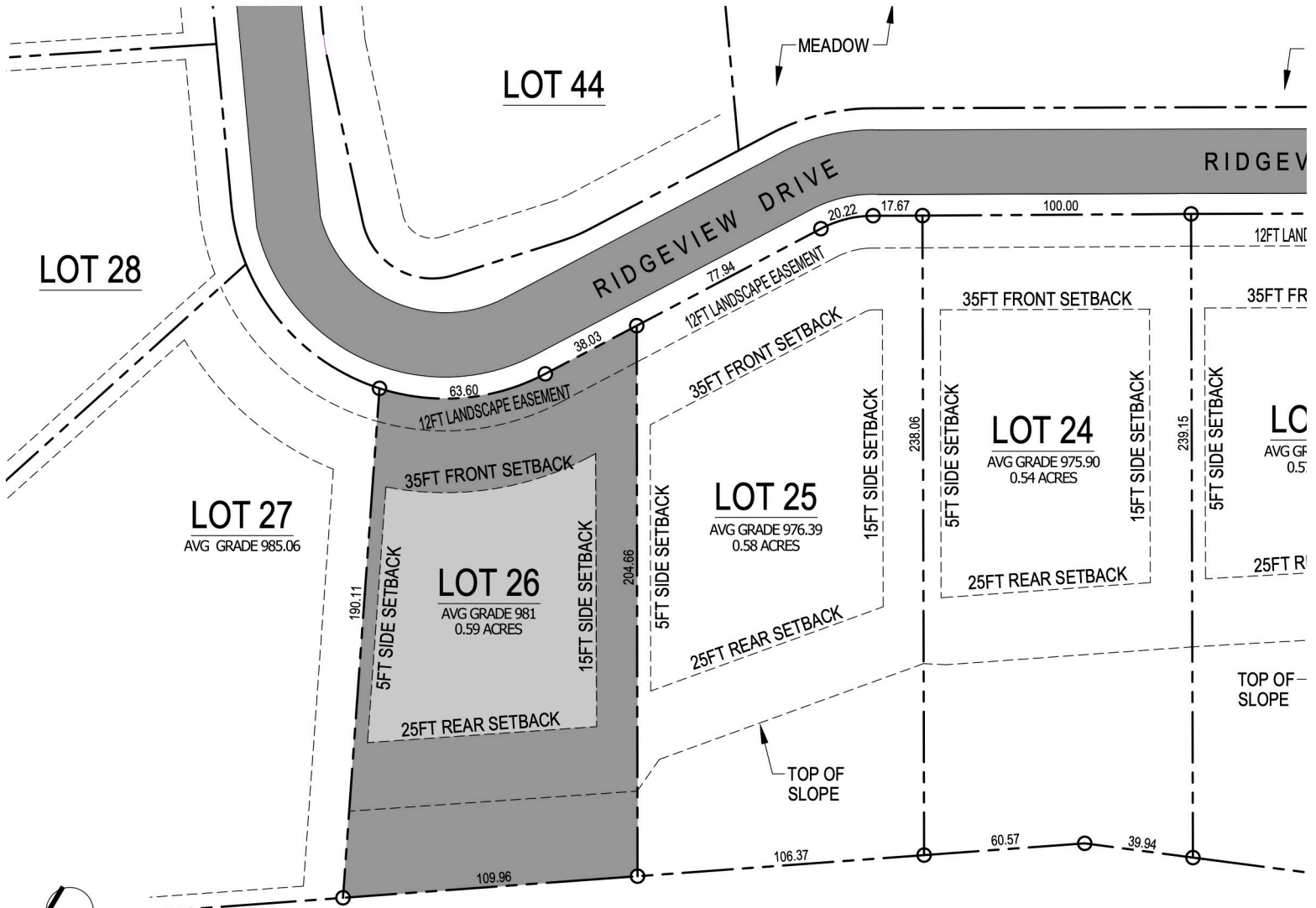
A Serene, Refined Retreat

Ideally situated on a large promontory overlooking the Columbia River, this private estate-inspired community boasts expansive, carefully designed lots to ensure abundant open space and panoramic views. The Ranch features two large meadows, an exclusive river view pool, year-round spa and pool house to take in the distinct vistas from river to ridge.



HOMESITE FEATURES

- Elevated above homesites to the south, offering layout flexibility to maximize views from inside and outside the home
- Protected river views are western facing, angling south downriver
- Limited opportunity to build a custom home in the area
- Perfect escape from activity near the river, but live close enough to access it all
- Access to Ranch-exclusive, river view pool and year-round spa
- Adjacent meadows reinforce privacy and open space
- Tight knit community with year-round and seasonal residents
- Private location with gated access



SCALE: 1"=60'-0"

The content (including pricing and availability), images, depictions, maps, and illustrations contained herein are for illustrative and informational purposes only and are intended to convey the concept and overall vision for the homes and the community based on current development and construction plans, which are subject to change at any time without notice. They are for guidance and general information only, and do not necessarily represent an accurate depiction of the finished homes or features of the homes or community. Any features, materials, colors, finishes, floor plans, square footages, and dimensions are approximate and will vary with actual construction. None of the information, descriptions, or depictions contained herein are intended to form any part of an offer to sell, warranty, or representation by or on behalf of the seller or builder. Prospective buyers should not rely on any content contained herein, and the purchase and sale of any home will be controlled exclusively by the terms of the purchase and sale agreement and related documentation mutually agreed upon by the seller and a buyer.