

CRESCENT RIDGE

HOMESITE 11

PLAN: COLUMBIA I

HOME SIZE: 2,831 SF

BEDROOMS: 3+DEN

BATHROOMS: 4.5

FINISH STYLE: REFINED WHITE OAK

LOT SIZE: 0.45 ACRES



THE VINEYARD NEIGHBORHOOD

Connected and Central

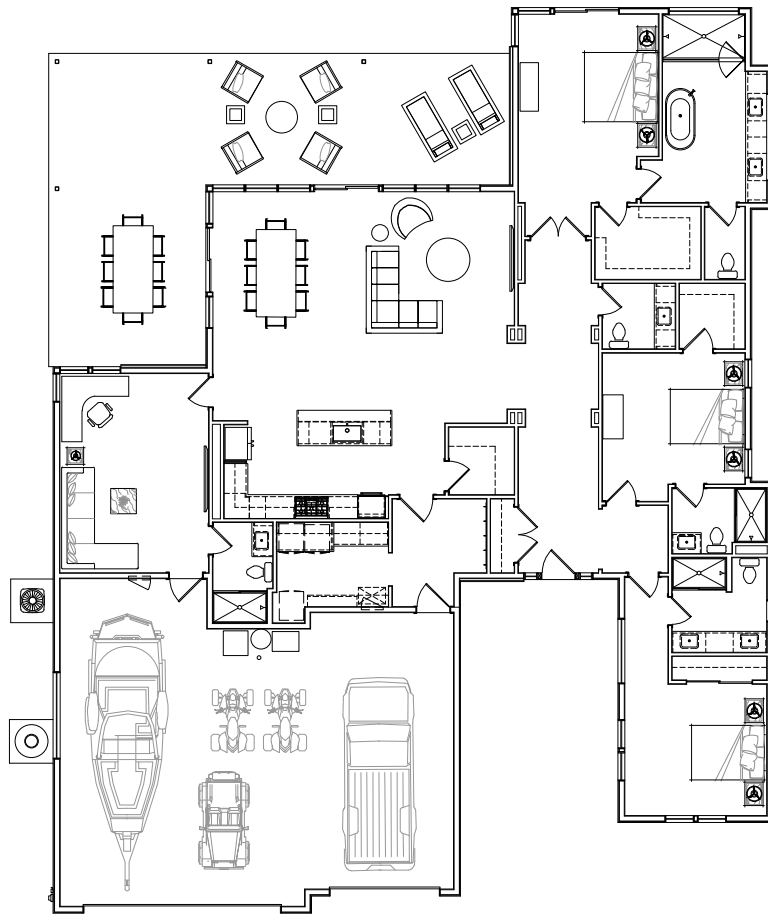
Generous corner homesite positioned to maximize ridge and water views. Trellised vineyard rows line streets and walkways.

This central location connects to central walking paths leading to the future pool, sport courts, fitness, retail, and entertainment amenities – with the boat launch, golf, parks, beaches, and dining just steps beyond.



HOME FEATURES

- Dramatic Grand Entry w/ over 10' high ceilings throughout
- Oversized office/den has separate entry to garage & ensuite bath
- Oversized mudroom w/ dual washer & dryer combos + utility sink
- Luxury Primary Suite w/WIC and an oversized spa-like 5-piece bath w/dual shower heads
- Covered entertainment patio with shade
- Extra-large 3-Car Garage w/12' high doors & EV charging capability
- Smart home package wired throughout
- Great Room with floor to ceiling windows, 10' high ceilings w/abundant natural light



COLUMBIA I

HOME SIZE: 2,831 SF
BEDROOMS: 3+DEN
BATHROOMS: 4.5