

CRESCENT — R I D G E —

HOMESITE 6

PLAN: COLUMBIA I

HOME SIZE: 2,831 SF

BEDROOMS: 3

BATHROOMS: 4.5

FINISH STYLE: RESORT SAND

LOT SIZE: 0.42 ACRES



THE VINEYARD NEIGHBORHOOD

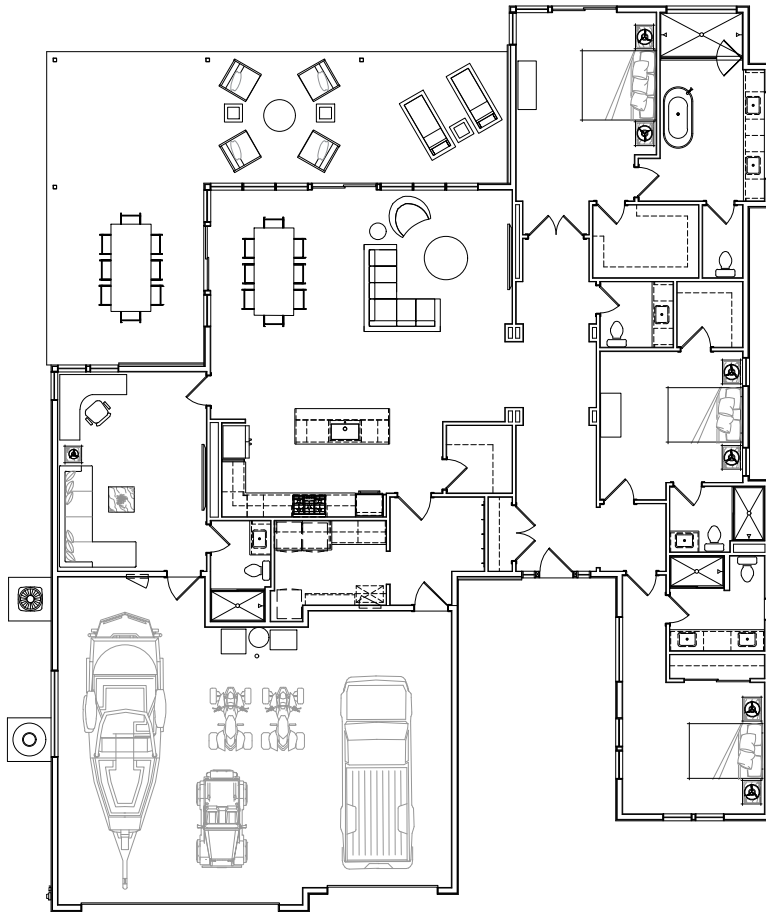
Connected and Central

Generous homesites feature contemporary homes positioned to maximize ridge and water views. Expertly landscaped, featuring trellised vineyard rows lining streets and walkways. This exclusive enclave is steps away from the boat launch, golf, parks, beaches, dining, and future pool, sport courts, fitness, retail, and entertainment amenities.



HOME FEATURES

- Dramatic Grand Entry w/ over 10' high ceilings
- Oversized office/den has separate entry to garage & ensuite bath
- Oversized mudroom w/ dual washer & dryer combos + utility sink
- Luxury Primary Suite w/MIC and an oversized spa-like 5-piece bath w/dual shower heads
- Covered entertainment patio with shade
- Extra-large 3-Car Garage w/12' high doors & EV charging capability
- Smart home package wired throughout
- Great Room with floor to ceiling windows, 10' high ceilings w/abundant natural light



COLUMBIA I

HOME SIZE: 2,831 SF

BEDROOMS: 3

BATHROOMS: 4.5