

CRESCENT RIDGE

HOMESITE 8

PLAN: SOLERA I

HOME SIZE: 2,018 SF

BEDROOMS: 3

BATHROOMS: 3

FINISH STYLE: TIMELESS SHAKER

LOT SIZE: 0.43 ACRES



THE VINEYARD NEIGHBORHOOD

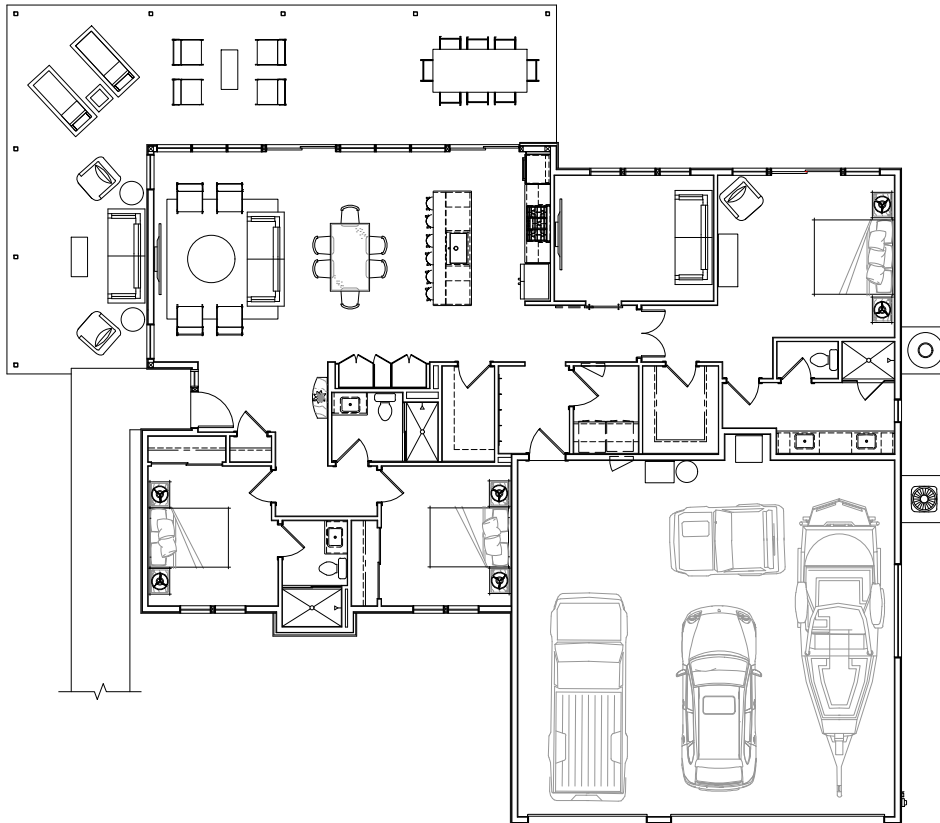
Connected and Central

Generous homesites feature contemporary homes positioned to maximize ridge and water views. Expertly landscaped, featuring trellised vineyard rows lining streets and walkways. This exclusive enclave is steps away from the boat launch, golf, parks, beaches, dining, and future pool, sport courts, fitness, retail, and entertainment amenities.



HOME FEATURES

- Private primary suite with separate patio
- Extra-large 3-car garage w/12' high doors & EV charging capability
- Great Room with floor to ceiling windows, 10' high ceilings w/abundant natural light
- Gourmet chef's kitchen with Thermador appliances & walk-in pantry
- Smart home package wired throughout
- Oversized mudroom, equipped with a full-size washer & dryer combo
- Additional built storage in great room



SOLERA I

HOME SIZE: 2,018 SF

BEDROOMS: 3

BATHROOMS: 3